

RenewableUK 22 June 2010

# Onshore Wind – Regional Context



**David Payne**

**Planning Manager**

**South East England Partnership Board**

# Overview



- ▶ **Regional policy, assessments and targets**
  - Policy
  - Targets
  - Evidence
  
- ▶ **Recent work – DECC regional assessments**
  
- ▶ **Brave New World...**

# Regional Policy



## ► **Targets (RPG9 & SE Plan)**

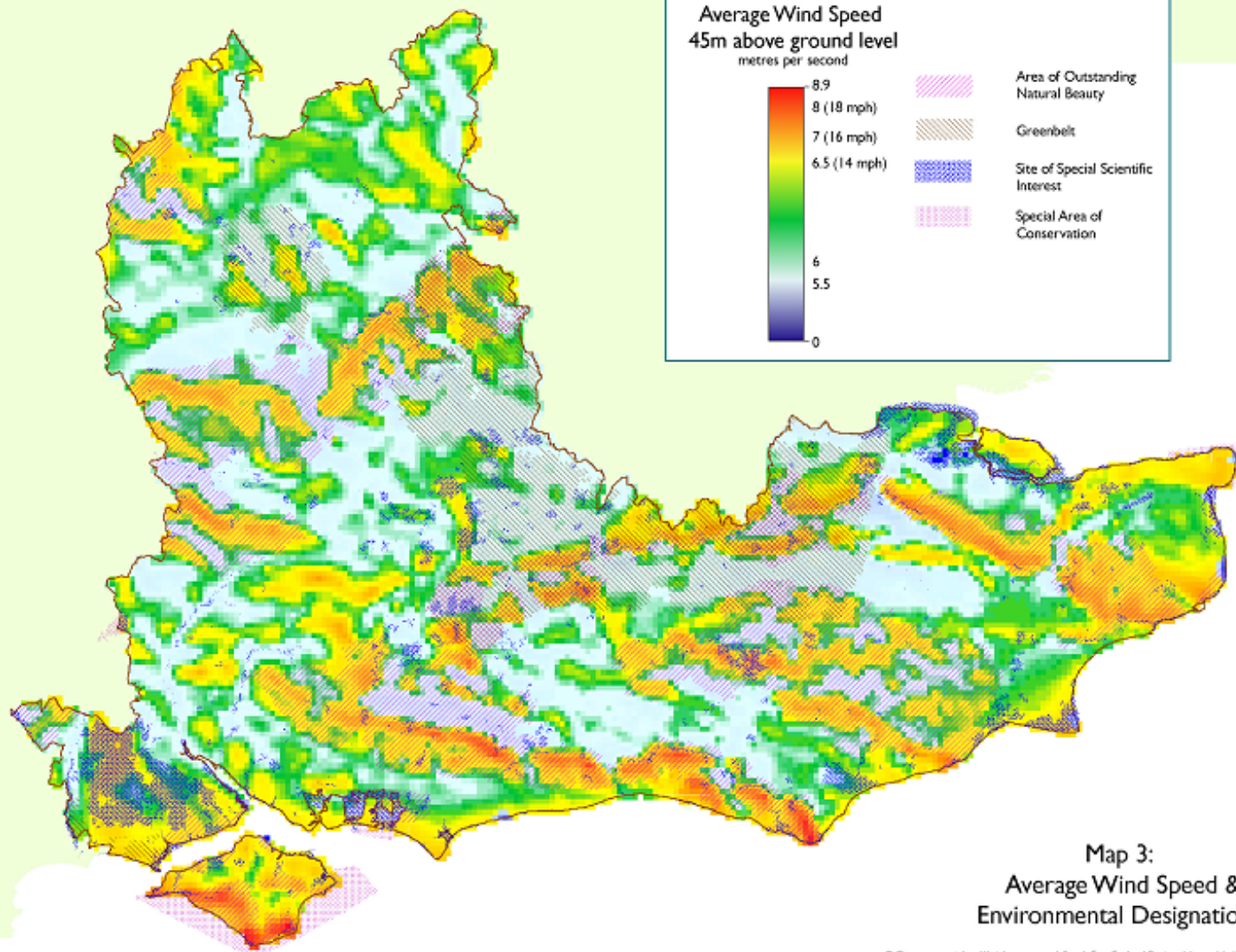
Minimum regional targets to be achieved through use of all resources/technologies:

By 2010:	620 MW (5.5% installed capacity)
2016:	895 MW (8%)
2020:	1130 MW (10%)
2026:	1750 MW (16%)

## ► **Policies (NRM15 & 16)**

- Priority to less sensitive parts of countryside & coast
- Location & design to minimise affects on landscape
- 'small scale or community-based' in protected areas – not precluded but 1-4 turbines totalling <5MW
- Criteria to assist decision making incl positive contribution to energy supply and CO2 reduction

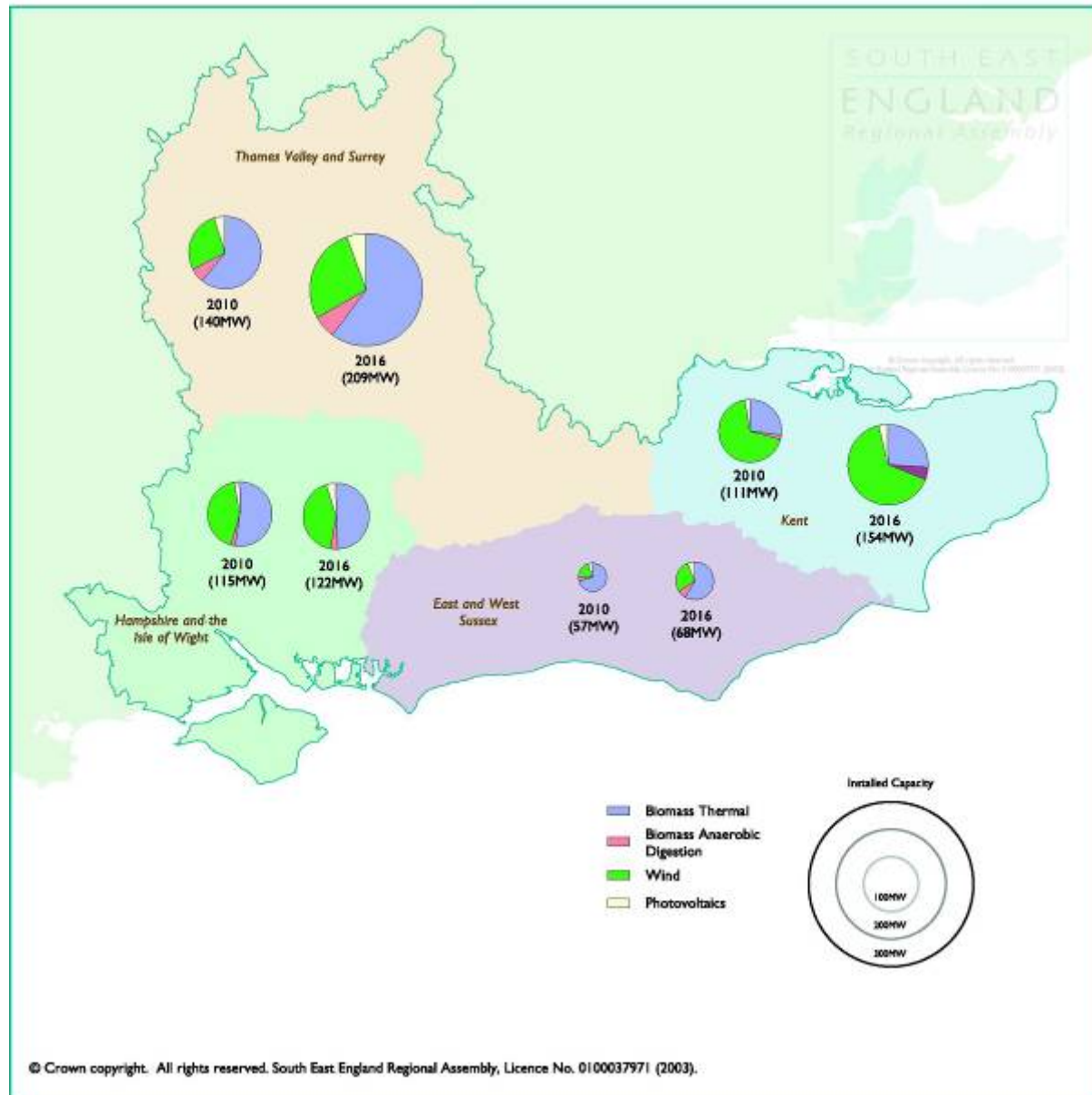
Strategic context for local policies and decisions



**Map 3:  
Average Wind Speed &  
Environmental Designations**

# Sub-regional targets

Map 1: Sub-Regional Land-Based Renewable Energy Potential, 2010 and 2016



# Wind - On-shore (land-based)



**2010**

potential for c.170 MW from mix of wind developments

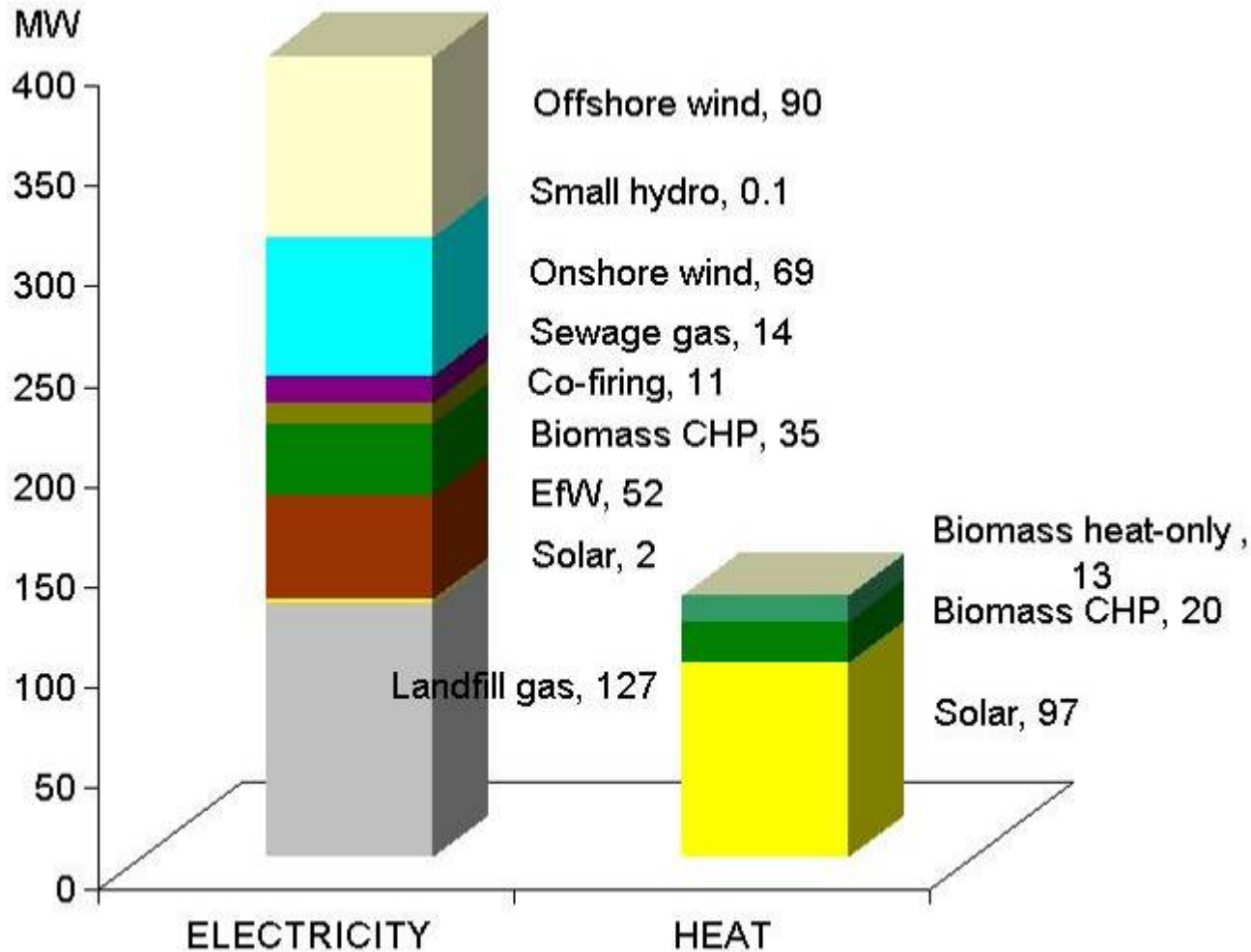
**2026**

c.210 MW from 1 large wind farm, 20 clusters, 24 single large turbines and 100 single small turbines



# Installed capacity

South East - Renewables capacity - End 2009





- Boundaries:*
- Biomassburg*
  - C.C.S.R. (Carbon Capture & Storage Republic)*
  - Enhanced Geothermalia*
  - Geothermalia*
  - Hydropia*
  - Isles of Wind*
  - Solaria*
  - Tidal States*
  - Vrania*

# Map of ENEROPA

Scale 1 : 20000000

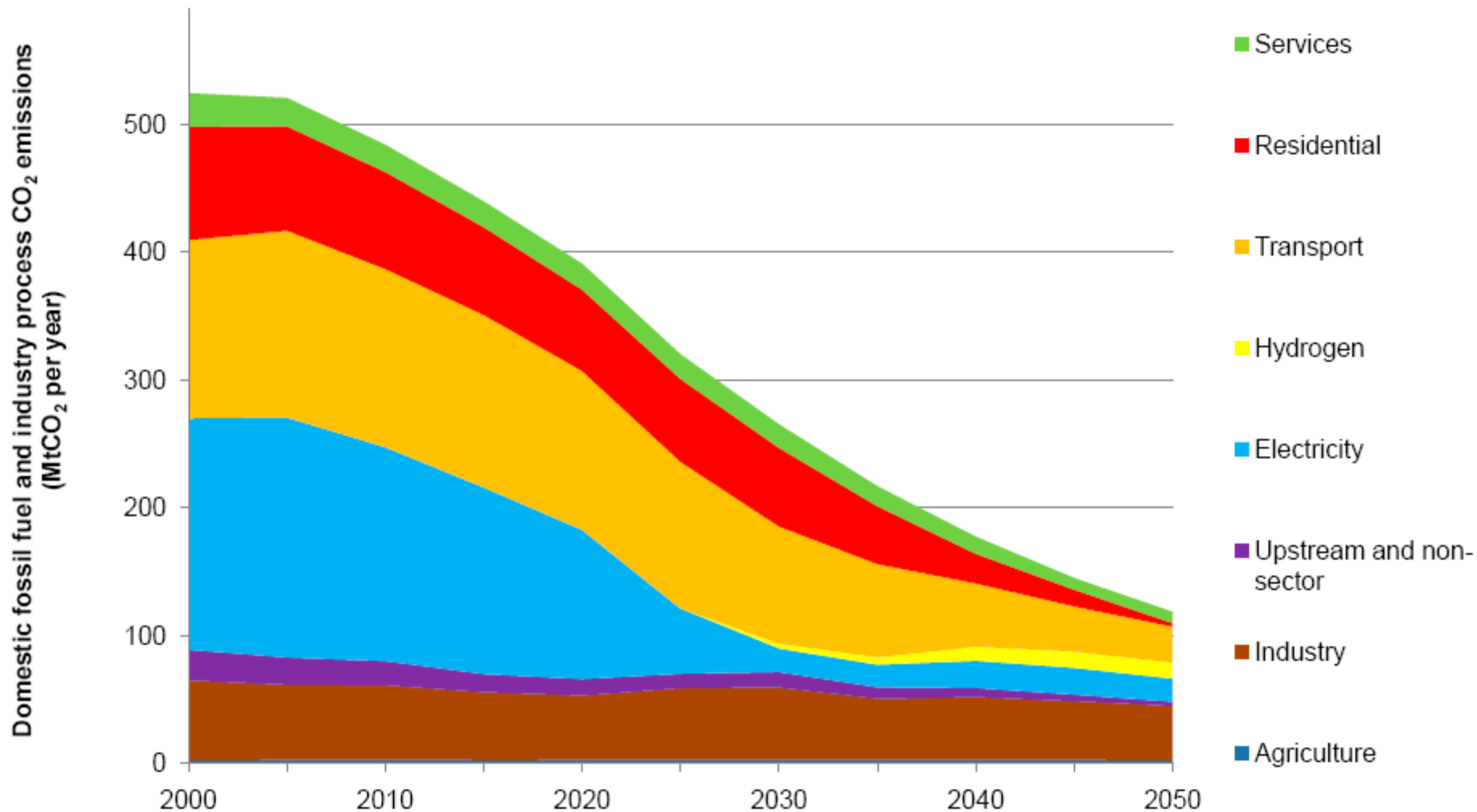


# Changing Context



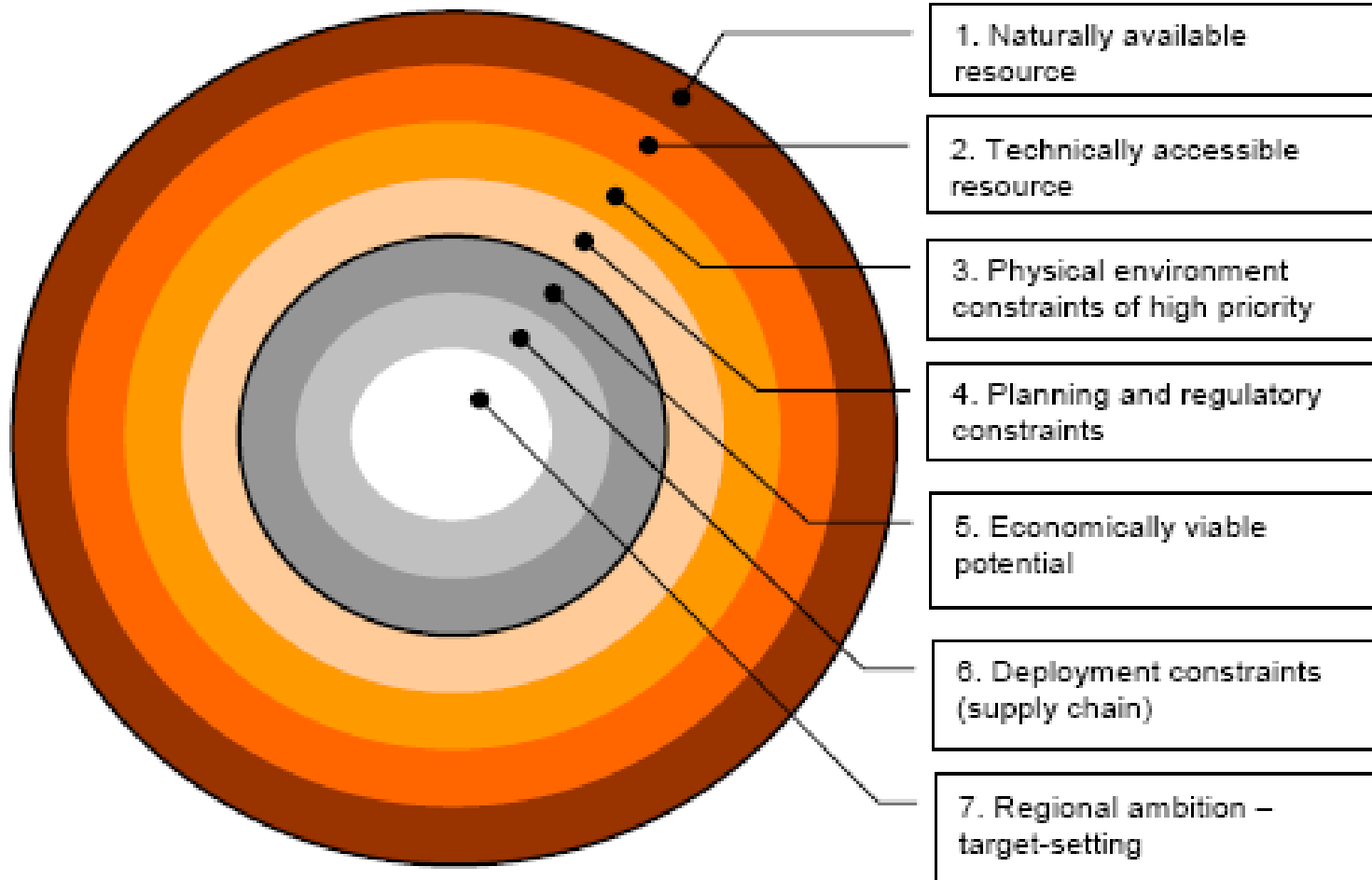
- ▶ **Renewable Energy Strategy 2009**
  - 15% energy consumption from renewables by 2020
  - > 30% electricity from renewables
- ▶ **Climate Change Act 2008**
  - 80% reduction in greenhouse gases by 2050
- ▶ **Low Carbon Planning Policy Statement 2010**
- ▶ **Coalition government reforms of planning**

# Changing Context



# Resource Assessments - DECC methodology (Jan 2010)

Figure 2-1 Stages for developing a comprehensive evidence base for renewable energy potential



# DECC methodology ...New SE Resource Assessment



- **Review evidence base and apply DECC methodology**
  - Review data, methodology and assumptions
  - Assess resource and constraints
  - Wind – assumptions on viable speed and areas in which different amounts/scale/density of development may be acceptable
  
- **Develop scenarios of potential**
  - Dependent on assumptions, use to inform targets
  
- **Consultation**
  - Testing assumptions, aspirations and developing targets

# DECC Methodology

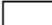



## ➤ Renewables in designated areas

1. Purposes/reasons for each designation
2. Which technologies may affect purpose/integrity
3. How technologies may affect purposes/integrity
4. Type and level of renewable and low carbon infrastructure that can be accommodated without compromising purposes/integrity
5. Provide guidance on how to integrate renewables/low carbon energy without compromising purposes
  - Consult Natural England...










## Review of Renewable and Decentralised Energy Potential in the South East

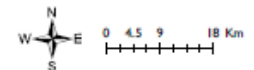
Windspeed greater than 5 m/s at 45m above ground level

### Key

-  South East Region
-  Heritage Coast
-  National Parks
-  Areas of Outstanding Natural Beauty

Windspeed (m/s) at 45m above ground level

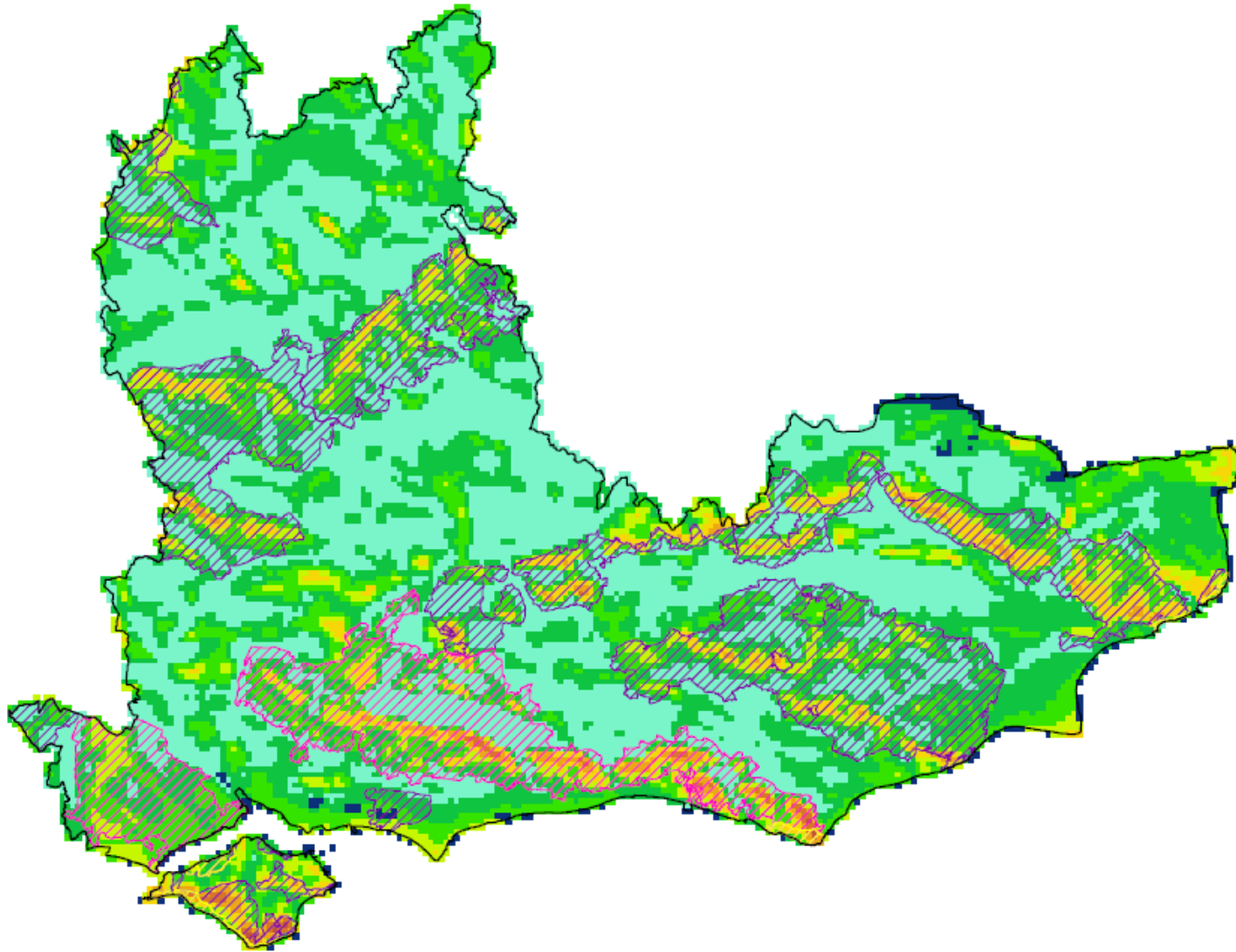
-  0.0 - 5.0 (excluded)
-  5.1 - 6.1
-  6.2 - 6.4
-  6.5 - 6.7
-  6.8 - 7.0
-  7.1 - 7.4
-  7.5 - 7.9
-  8.0 - 8.4
-  8.5 - 8.9



**DRAFT**

Source: NOABL, Natural England

Date: 14/05/2010  
Revision:



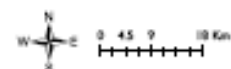
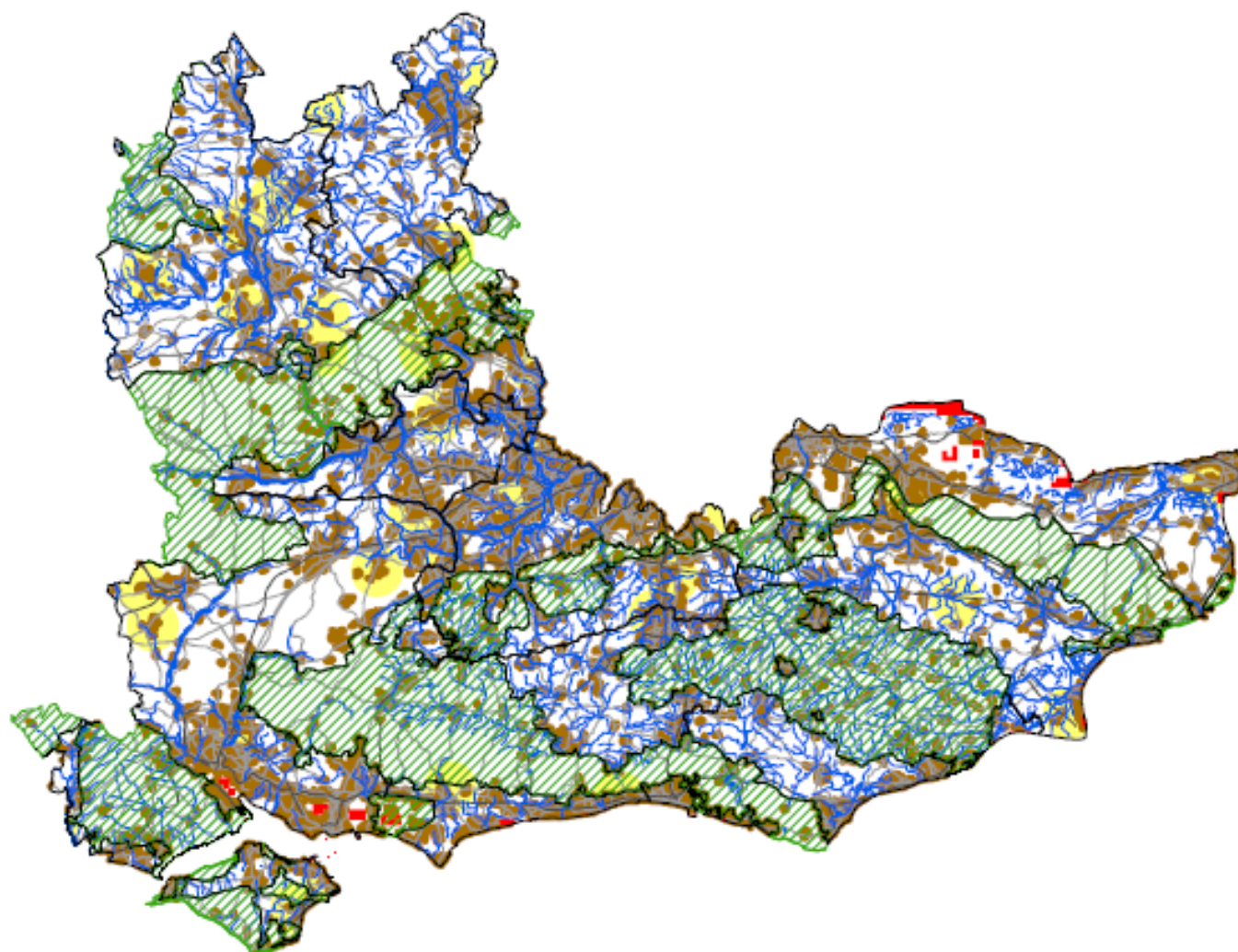
## Review of Renewable and Decentralised Energy Potential in the South East

### Infrastructure constraints

#### Key

##### Analysis boundaries

-  County boundaries
-  Landscape Designations
-  Windspeed below 5m/s
-  Rivers, canals and lakes
-  Railways with topple distance
-  Roads with topple distance
-  Urban areas with 600m buffer
-  Civil and military airports and aerodromes



**DRAFT**

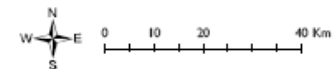
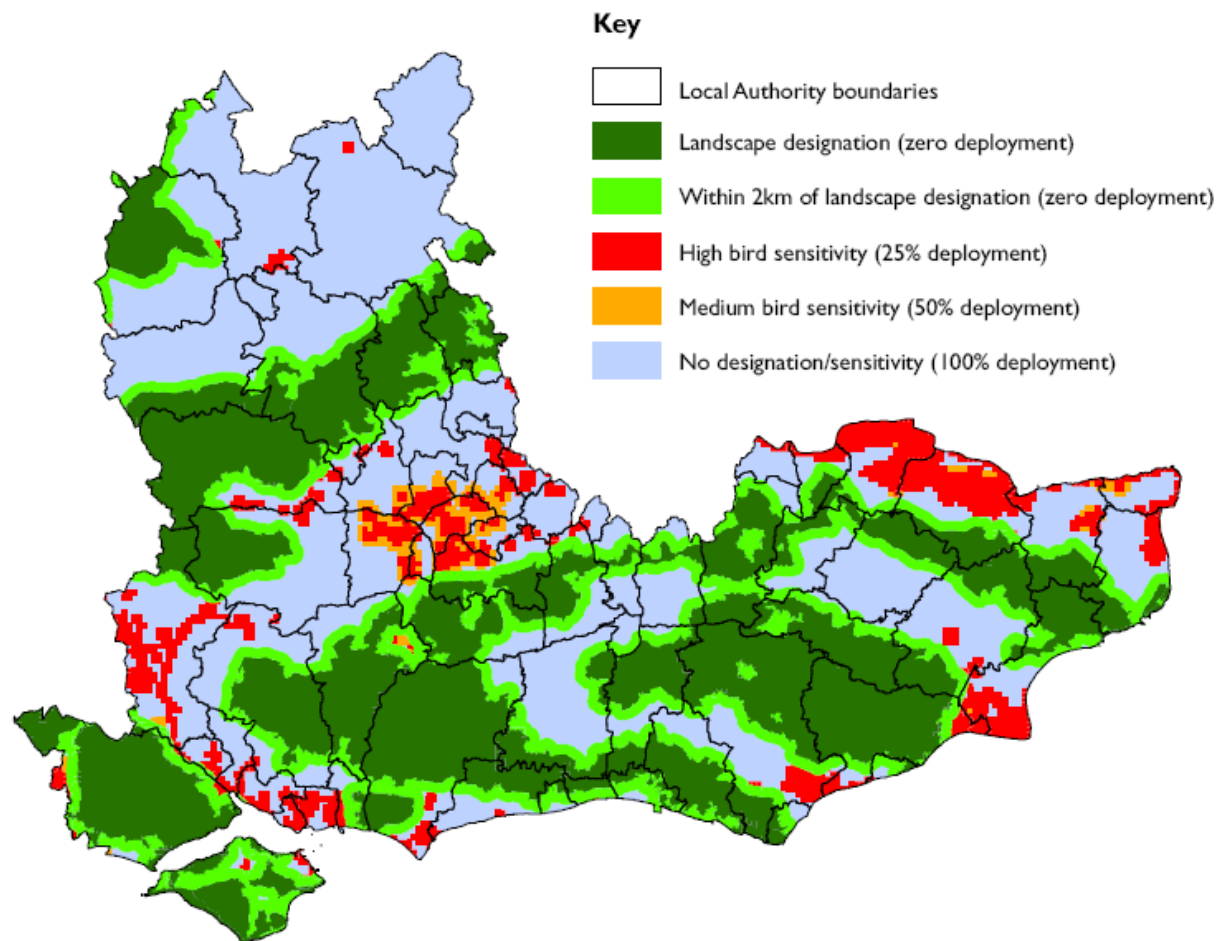
Source: OS, Natural England, CAA,  
ONS, NOABL

Date: 11/05/2010

Revision:



## Review of Renewable and Decentralised Energy Potential in the South East



**DRAFT**

Source: OS, Natural England, CAA,  
ONS, NOABL, English Heritage, RSPB

Date: 14/05/2010  
Revision:



## Key



Landscape Designations



Commercial scale wind constraints (no potential)

### Unconstrained land



Not Designated (Highest potential)



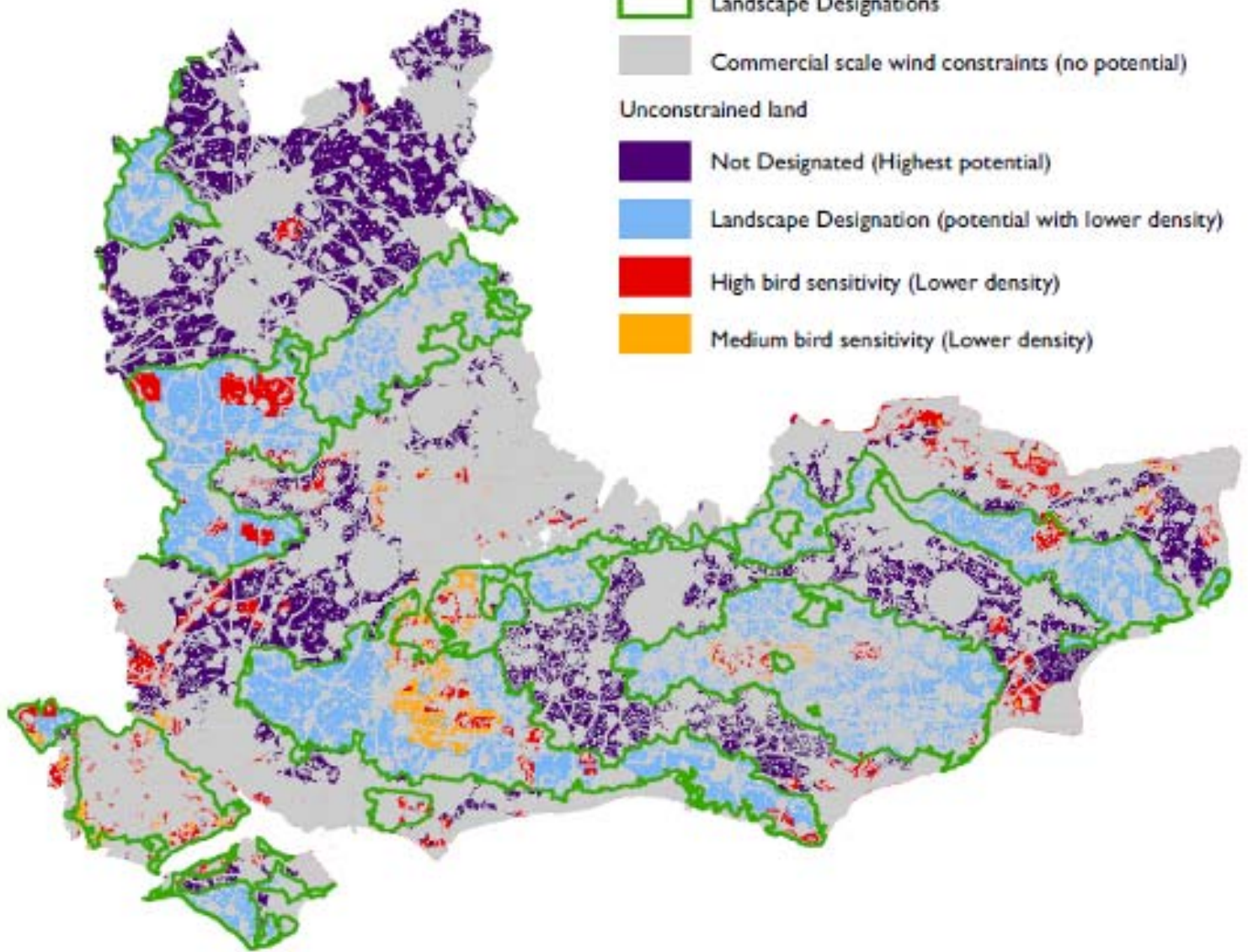
Landscape Designation (potential with lower density)



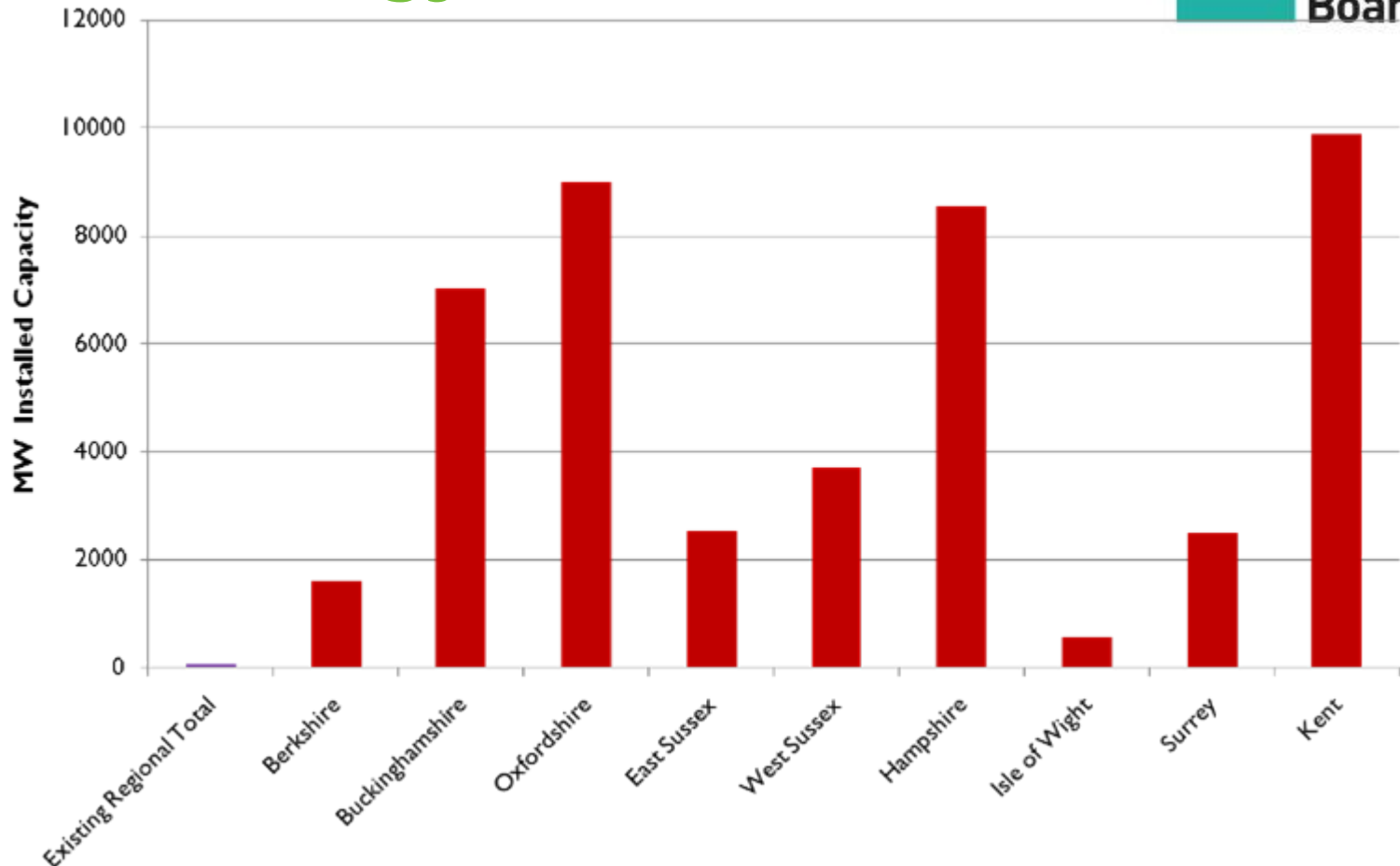
High bird sensitivity (Lower density)



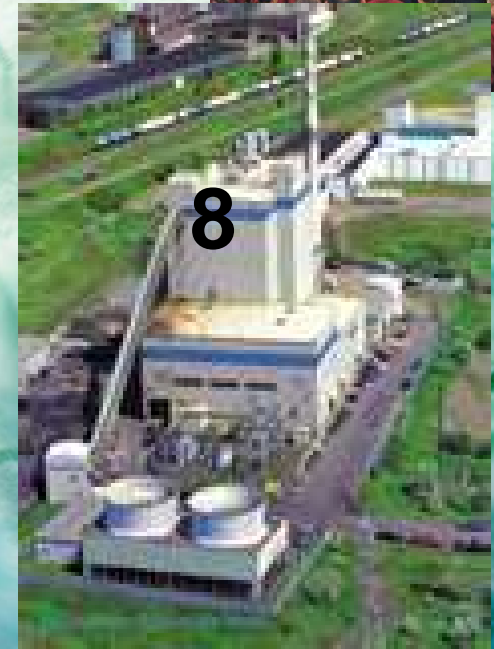
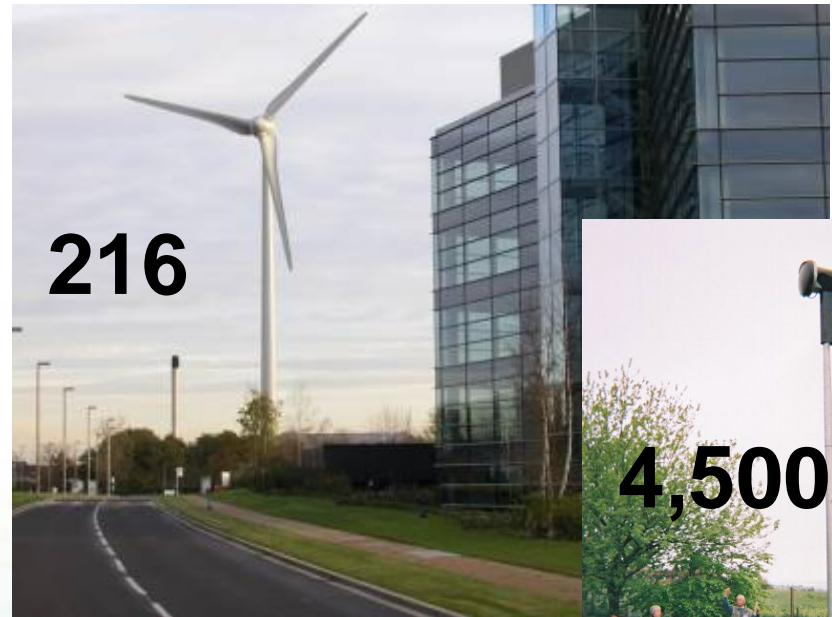
Medium bird sensitivity (Lower density)



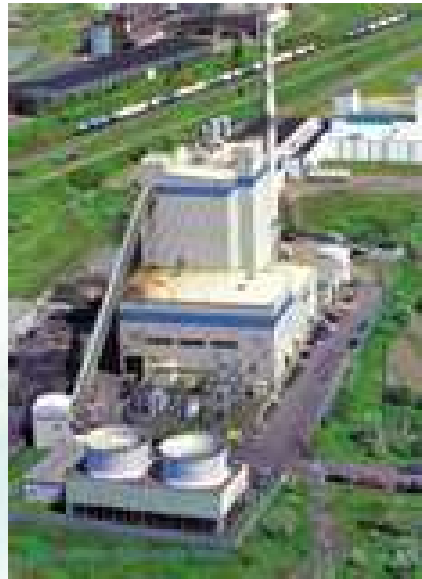
# Initial Findings: *Potential* wind energy resource



**NB: This is the accessible resource potential in undesignated areas before other factors e.g. economic viability, planning, grid connection have been taken into account.**



Medium scenario  
15% consumption



# the future...

- **Finalise July 2010**
  - Were to inform regional strategy
  - Context for further work on scenarios, targets and policy
  
- **Results disaggregated as locally as possible**
  - District or county level
  - Inform local planning
  
- **Intellectual property of SE England Councils**

# The future...

## 'Open source' planning

### Localism and decentralisation are priorities

- Abolition of Regional Spatial Strategies
- Planning Inspectors will not be able to 're-write' plans
- Upper tier authorities to draw up infrastructure plans

### Emphasis on community engagement and support

- Bottom-up plan making – starting with neighbourhoods
- Significant projects to be designed through collaboration with neighbourhood
- Presumption in favour of 'sustainable development' (conforming to national standards and local policies)
- Duty to cooperate on LPAs and others

### Support for renewables

- Community support essential
- Local authorities choosing to host wind farms keep business rates for 6 years

**Implications for [wind energy] development in South of England? 'It's for you to decide'**

6/25/2010



**Thank You, and goodbye!**

**[davidpayne@se-partnershipboard.org.uk](mailto:davidpayne@se-partnershipboard.org.uk)**