



SCOTTISHPOWER RENEWABLES

Debbie Harper
Development and Policy Manager

Windfarm development

Agenda

- Introduction to ScottishPower
- Coldham Windfarm
- The windfarm development process
- Key issues

ScottishPower Renewables

– The UK Leader



- UK's largest onshore windfarm owner/developer
- 24 windfarms, over 800MW operating capacity inc:
 - Whitelee 322MW, largest in Europe
- Over 220MW in construction
- Over 1,700 MW consented including first offshore windfarm at West of Duddon Sands (333MW share)
- Over 500MW in planning
- Excellent conversion rate of projects in planning, 90%+

Holistic Approach – Long-Term

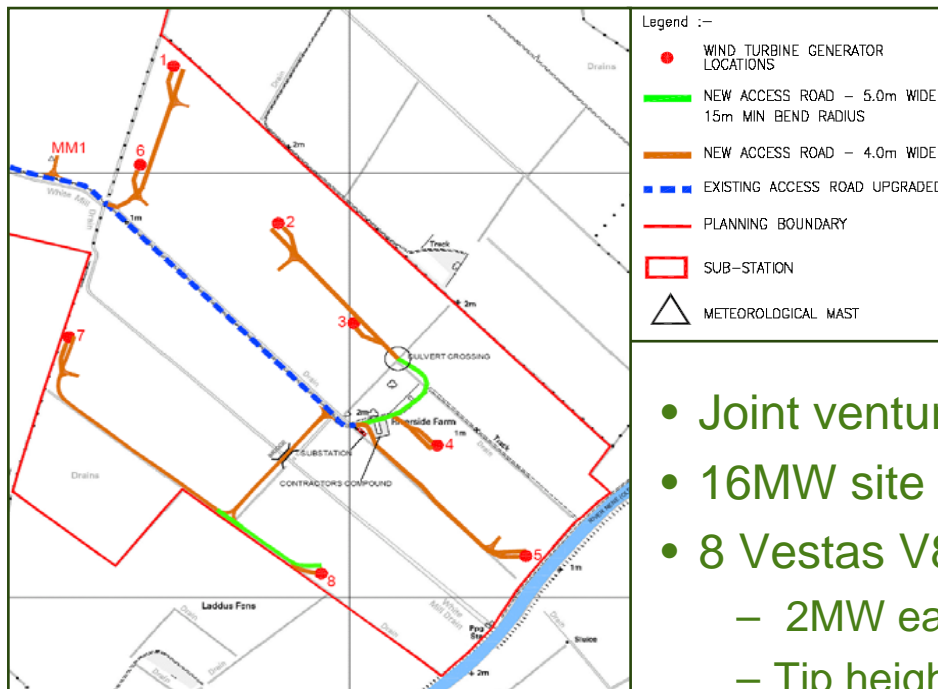


Focus on long-term requires holistic approach:

Site selection / Consultation / Development / Construction / Operations



Coldham windfarm



- Joint venture Co-Operative group & ScottishPower
- 16MW site comprising:
- 8 Vestas V80 turbines
 - 2MW each
 - Tip height 100m – hub 60m, blade diameter 80m
- Electricity supplies 9000 homes
- Offset around 12000 cars
- £17m investment
- Community benefit scheme focused on local education

Windfarm development lifecycle



Windfarm development lifecycle



Search

- GIS review
- Approaches from landowners
- Land agents
- Formal Tenders
- Extensions
- Repowering

Feasibility

- Grid
- Road network and access
- Ground conditions
- Designations
- Aviation radar
- Planning policy
- Proximity to properties

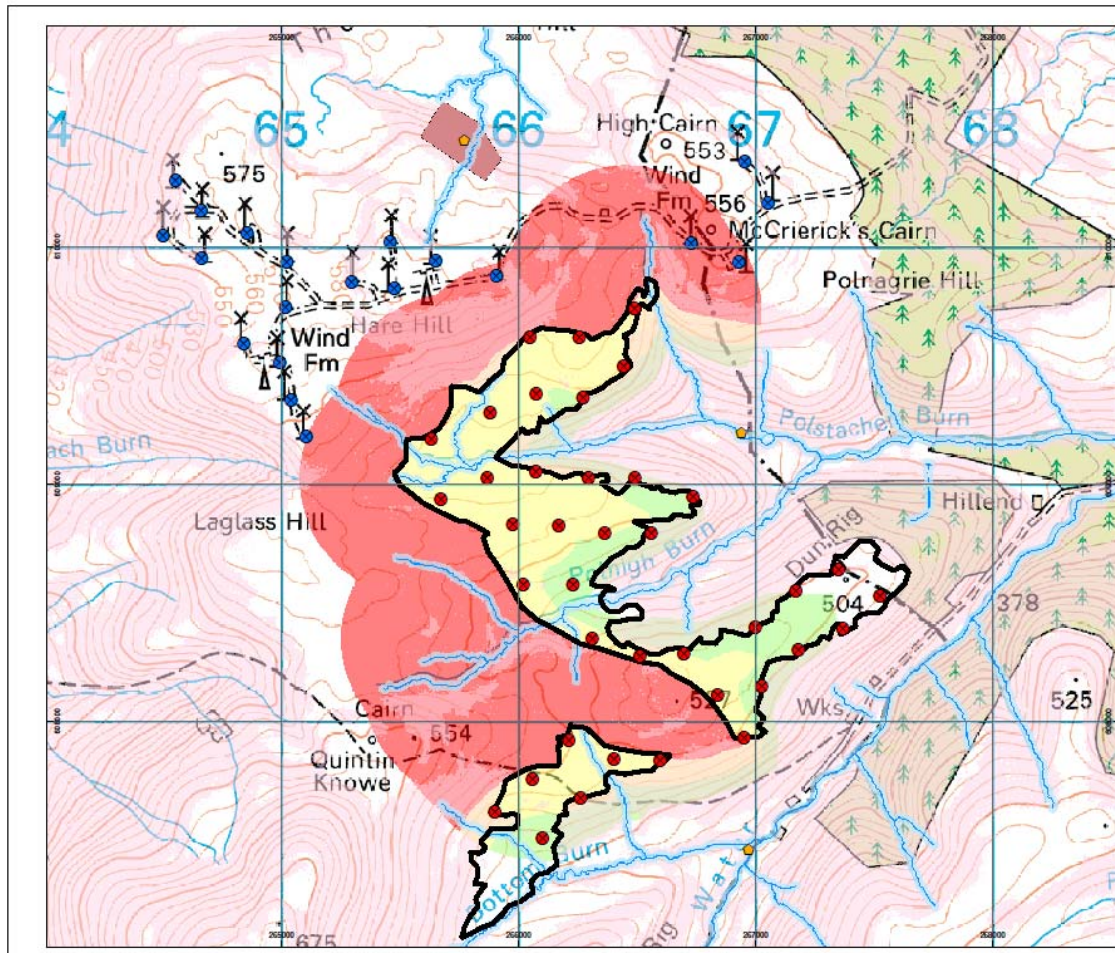
Windfarm development lifecycle



- Scoping
- EIA
- Design layout
- Planning application

18 – 24 Months





ScottishPower
renewables

m Mott MacDonald

Legend

- Existing Turbines
- Proposed Turbine Layout
- Constraints Boundary
- 20m watercourse Buffer
- Archaeological Features

Slope Gradient Distribution

- Less than 8 degree slope
- Over 8 degree slope

Radar Restrictions

- Maximum Turbine Height
- Visible to Prestwick Airport
- Turbines must be less than 100m
- Turbines may be over 100m

Scale 1:15,000

0 75 150 300 450 600 Meters

Constraints Map

Hare Hill Windfarm Extension

Reproduced from, or based upon OS map with sanction of the Controller of H.M. Stationery Office. Crown Copyright Reserved

Windfarm development lifecycle



- Resolve issues/objections
- finalise, agree planning conditions
- Section 106 agreements
- Secure consent

4 - 48 months

Windfarm development lifecycle

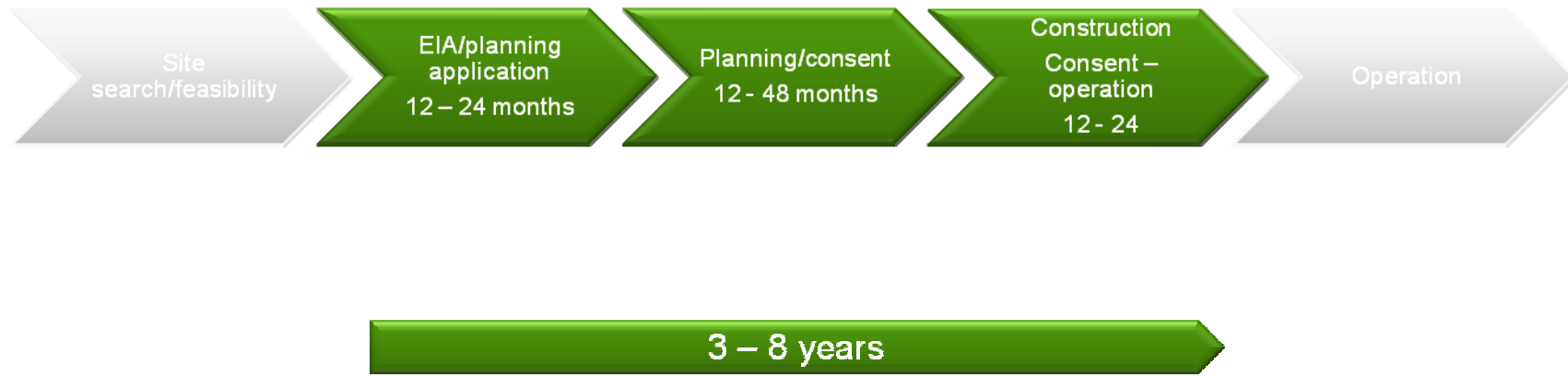


Construction 12 -24 months

- Tendering contracts, site investigation
- Discharging planning conditions
- Grid connection

Operation 25 years

Timescales



Summary and key issues

- ScottishPower Renewables adopts a best practice approach to windfarm development, which is implemented across our UK development portfolio
- As a leading developer with a large portfolio we bring expertise from many sites
- Projects do bring local economic and community benefits
- Prefer to have flexibility in design of local benefit schemes



Summary and key issues

- Potentially long time from planning application to consent
- The extent of environmental information requested - overly cautious approaches
- In England some LPAs progressing applications quickly
- LPA's and Statutory consultees work with us to resolve issues pre application
- Seeing first projects come through planning reform
- Anticipation of Localism Bill with potential challenges