



## The Data Environment: Lessons Learned

By Dr Mike Osborne

MD, OceanWise Ltd

Chair, AGI / IMarEST Marine Mapping and Planning Special Interest Group

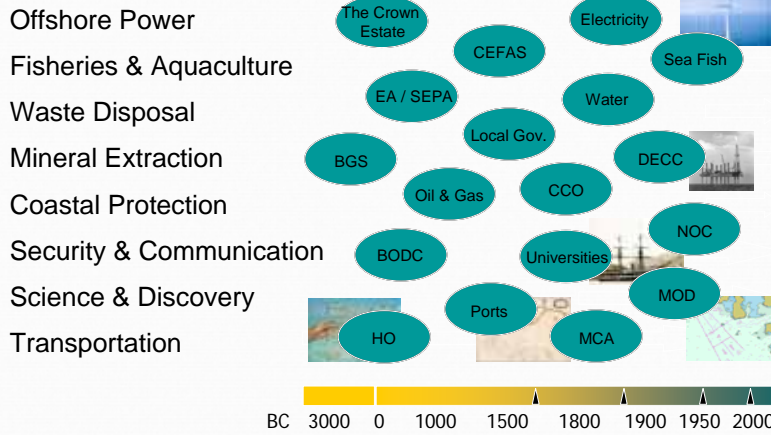
Member, Marine Environmental Data and Information Network (MEDIN) Executive



## Contents

- Data History
- Gaps and Obstacles
- Data Policy Landscape
- MEDIN
- COWRIE
- Marine Policy, Planning and Licensing
- Recommendations for Marine Cables

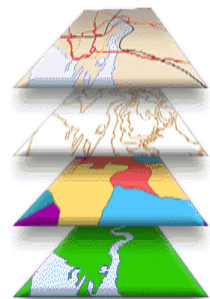
## History of Marine Data



## Importance

All stages of marine cable development require access to:

- Comprehensive accessible fit for purpose data
- Quality assurance, confidence levels and provenance
- Data processing and management tools
- Presentation and dissemination tools
- Expert knowledge on:
  - information management
  - marine data standards
  - specifications for acquisition and delivery



## Gaps and Obstacles

- Metadata unavailable or unpublished
- Data collected for single purpose and not shared (data silo)
- Data exists as hard copy only or is unstructured (e.g. PDF)
- No consistent widely accessible reference base (marine map)
- Incompatible regional datasets making collation and broad scale mapping at UK level impossible
- No support or funding for updates and maintenance
- Hidden or inconsistent licensing terms
- No attribution relating to provenance and use

## Linking Data to Legislation and Policy



Anchor Area:  
An area in which vessels anchor or may anchor. (IHO Dictionary, S-32, 5th Edition, 130)

But how real is the constraint, can it be amended or restrictions and risk mitigated? How do I find out more and who do I contact? What am I missing?

## Data Policy Context



data.gov.uk



Marine Cables Seminar 7 October 2010

7

## MMO Data Strategy – Principles

Data used in decision making will be controlled & quality assessed



Adoption of common standards ensures consistency and re-use



Use of shared services provides efficiency and co-working



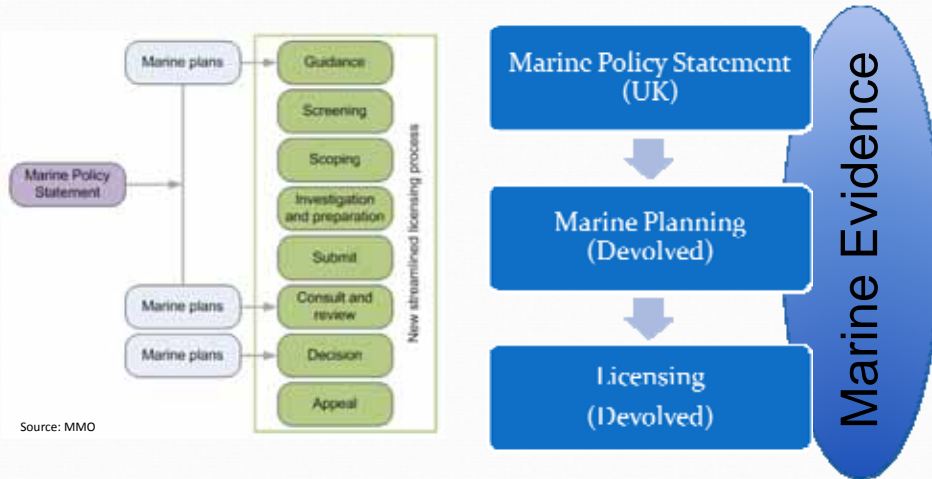
Internal datasets will be coordinated with owners assigned



Data will be published unless there is good reason not to (e.g. DPA)



## Marine Policy, Planning and Licensing



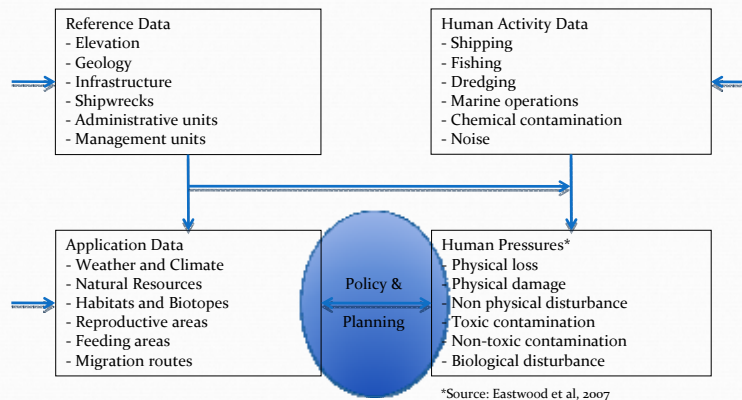
Source: MMO

*Warning: Defra consultation closes 13 Oct 2010*

Marine Cables Seminar 7 October 2010

11

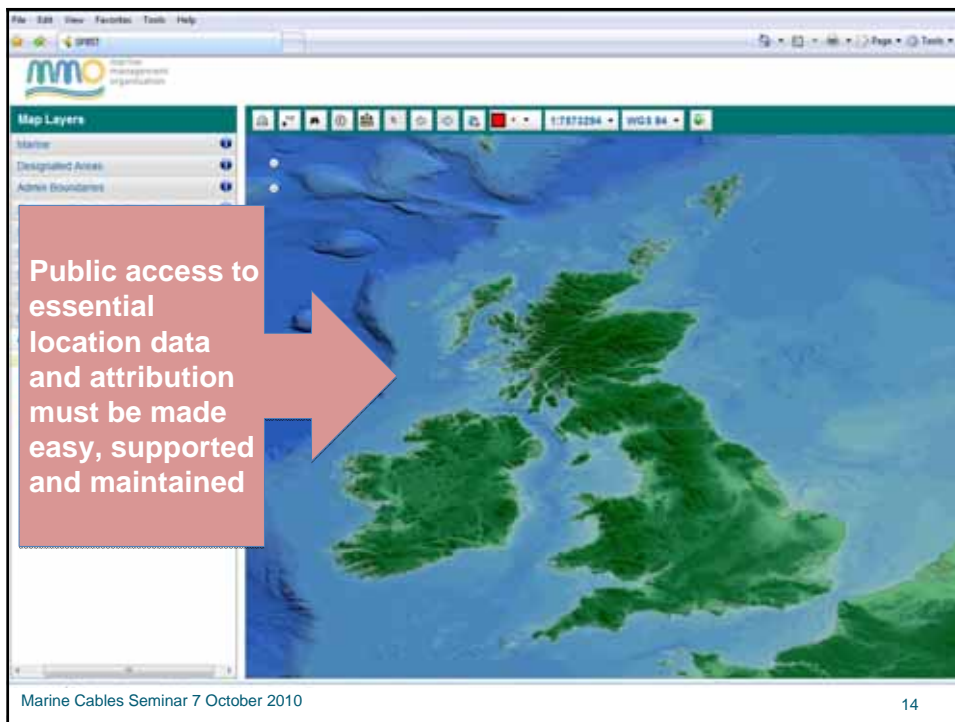
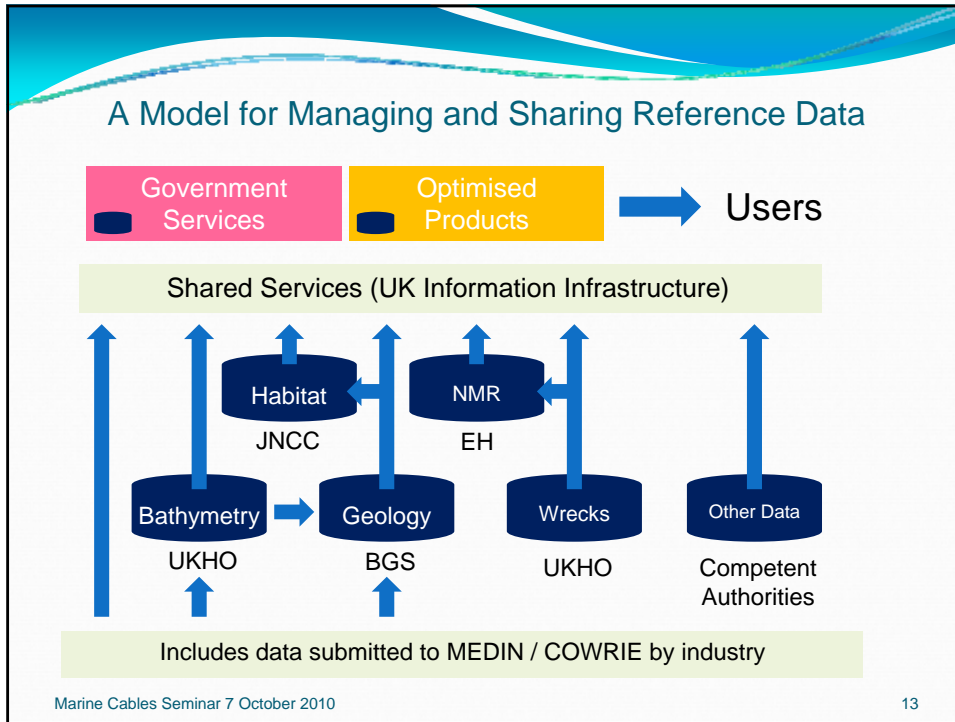
## A Process Model for Marine Evidence - Overview



\*Source: Eastwood et al, 2007

Marine Cables Seminar 7 October 2010

12

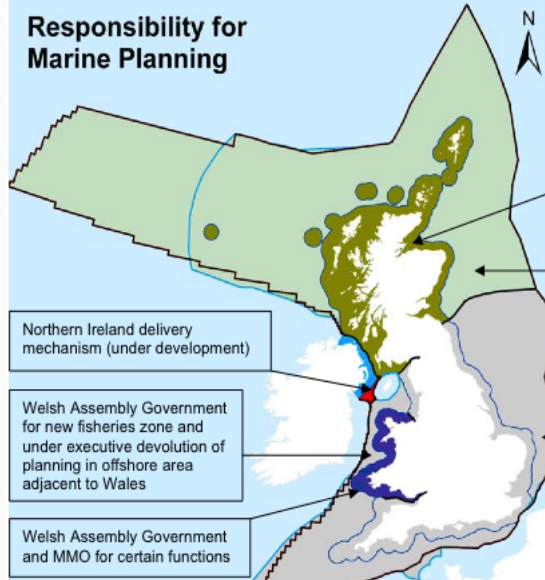


## Issues for Industry

- Adopt common data standards to make data exchange easy
- Demand consistency between TCE, MMO and Devolved Administrations
- Submitted data must deliver wider benefits
- Encourage improvements and dissemination of base data
- Ensure data concerns are highlighted in consultation
- Contribute evidence to the marine planning process to back up future aims

Marine Cables Seminar 7 October 2010

## Responsibility for Marine Planning



## What next for marine cables?



- Lobby Government to ensure evidence is made available easily and coherently
- Request that decision making is truly open and transparent
- Drill down into the provenance of (especially constraints) data
- Collate 'evidence' of future plans and make it available
- Contribute now to the consultation and marine planning process

Marine Cables Seminar 7 October 2010

16



**Thank you**

**[mike.osborne@oceanwise.eu](mailto:mike.osborne@oceanwise.eu)**

**Marine environmental data acquisition,  
management, publication and GIS**