



John Linden
Principal Planner
Planning Policy Section



www.planningni.gov.uk



GETTING THE WIND UP



Planning for Renewable Energy in Northern Ireland

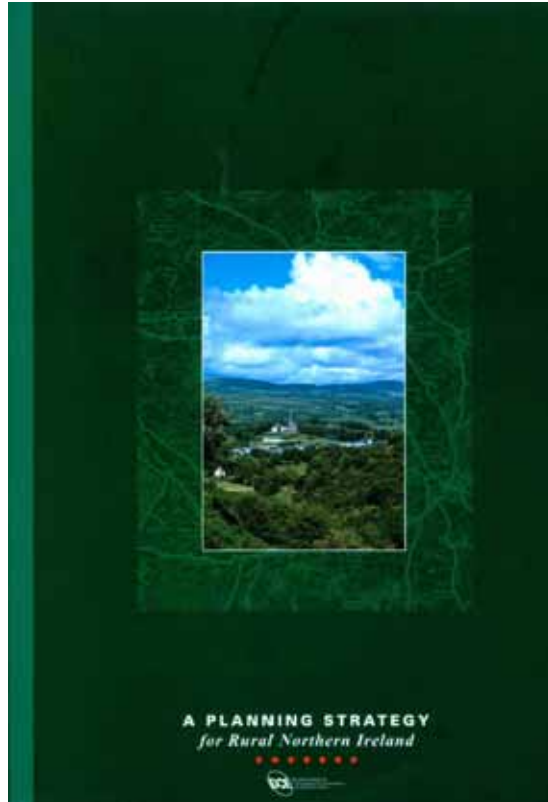


www.planningni.gov.uk



Current Policy Position

Planning Strategy for Rural Northern Ireland



POLICY PSU 12 Renewable Energy

To assess proposals for renewable energy sources against the need to protect and conserve the environment.

Generally promotive of wind energy
Geographical potential of the Region
Need for balance
Presumption against development in
AONBs



www.planningni.gov.uk



Extant windfarms/approvals

Name	District	No. of Turbines	Capacity (MW)
Corkey	Antrim	10	5
Rigged Hill	Antrim	10	5
Elliots Hill	Antrim	10	5
Bessy Bell	Tyrone	10	5
Slieve Rushen	Fermanagh	10	5
Owenreagh	Derry	10	5
Lendrum's Bridge	Tyrone	20	13.2
Altahullion	Derry	20	26
Lough Hill	Tyrone	7	12.25
Callagheen	Fermanagh	13	22.75
Tappaghan	Fermanagh	13	19.5
Bessy Bell 2	Tyrone	9	11.7
Wolf Bog	Ballymena	5	8.75 (Max)
Owenreagh 2	Strabane	6 (Sub. 5)	5.1
Bin Mountain	Strabane	6	9
Lough Hill	Omagh	6	10.5
Ext to Altahullion	Limavady	9 (Sub. 5)	5.2 Add
Slieve Rushen	Fermanagh	23	69



www.planningni.gov.uk





Altahullion Wind Farm, Co. Derry



www.planningni.gov.uk



Current proposals in the Planning System

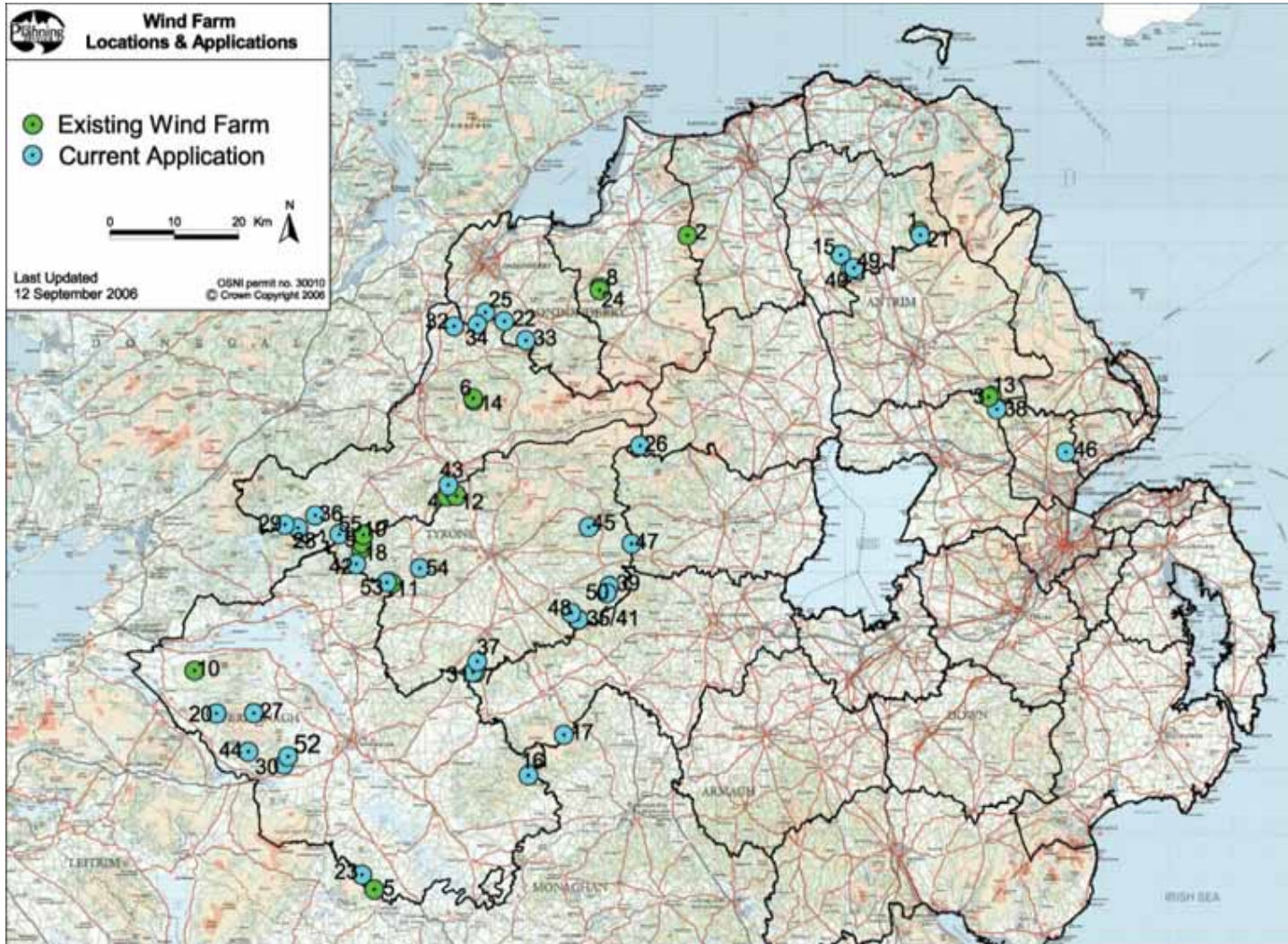
Name	District	No. of Turbines	Capacity (MW)
Garves Mountain Farm	Ballymoney	8	16
Garrane	Fermanagh	10	17.5
Slieve Beagh	Dungannon	12	30
Tullinoid	Fermanagh	9	15.75
Gruig	Ballymoney	14	24.5
Slieve Kirk	Derry	25	75
Curryfree	Derry	8	13.2 (Max)
Mullaghturk	Magherafelt	7	10.5
Old Barr	Fermanagh	11	22
Tievenamenta	Strabane	22	66
Crighshane	Strabane	14	28 (Max)
Belmore	Fermanagh	10	30
Hunters Hill	Omagh	10	16.5 (Max)
Gortmonly	Strabane	6	18
Eglis	Derry	9	27
Carrickatane	Strabane	15	45
Slieve Divena	Omagh	12	18
Churchill	Strabane	8	16
Screggagh	Omagh	13	19.5
Drumadarragh	Newtownabbey	10	20

Name	District	No. of Turbines	Capacity (MW)
Crockagarron	Omagh	6	18
Glenbuck	Ballymoney	1	2.5
Slieve Divena 2	Omagh	8	12
Thornog	Omagh	5	10
Rakelly	Omagh	7	14
Ora More	Fermanagh	13	30
Crockdun	Omagh	9	27
Carn Hill	Newtownabbey	11	22
Cregganconroe	Cookstown	8	16
Altamooskan	Omagh	6	12
Long Mountain	Ballymoney	16	36.8
Gortfinbar	Omagh	8	24
Tappaghan Extension	Fermanagh	8	12
Pollnalaght	Omagh	14	42
Gortgall	Fermanagh	8	18.4
Altgolán	Strabane	13	39
Seegronan	Strabane	9	27
Elginny Hill	Ballymena	22	44
Eshmore	Dungannon	7	21
Bessy Bell (Rev)	Omagh	6	9



www.planningni.gov.uk





www.planningni.gov.uk



The Planning Process

- Need for Environmental Impact Assessment
- Environmental Statements
 - 2+ turbines
 - >15m in height
- Concerns over the quality of information received
- Centralised Team in Planning HQ
- Input from Consultees



www.planningni.gov.uk



CHANGING CONTEXT

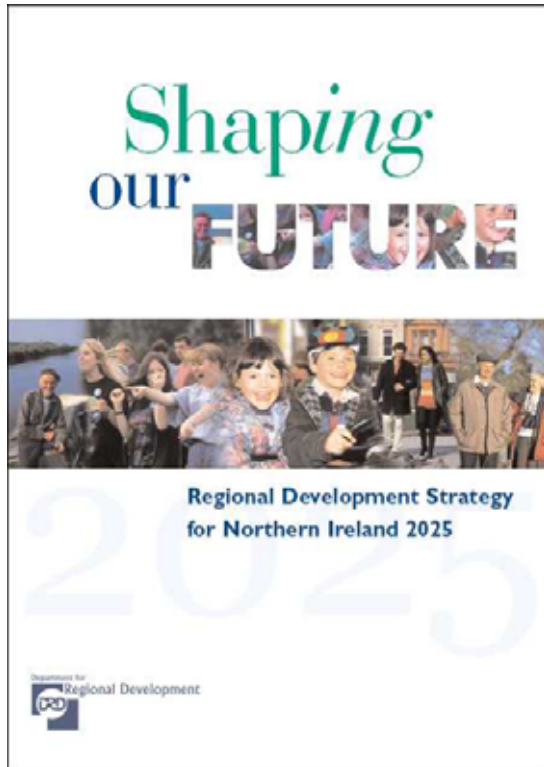
- Regional Development Strategy
- Sustainable Development Strategy
- Energy Review



www.planningni.gov.uk



Regional Development Strategy for Northern Ireland 2025 - Shaping our Future



Caring for the Environment

SPG-ENV5: To respond to the implications of climate change and promote more prudent and efficient use of energy and resources, and effective waste management

ENV-5.3: promote the use of cleaner and more efficient fossil fuels and the exploitation of renewable sources of energy and alternative energy technology



www.planningni.gov.uk



Northern Ireland Sustainable Development Strategy



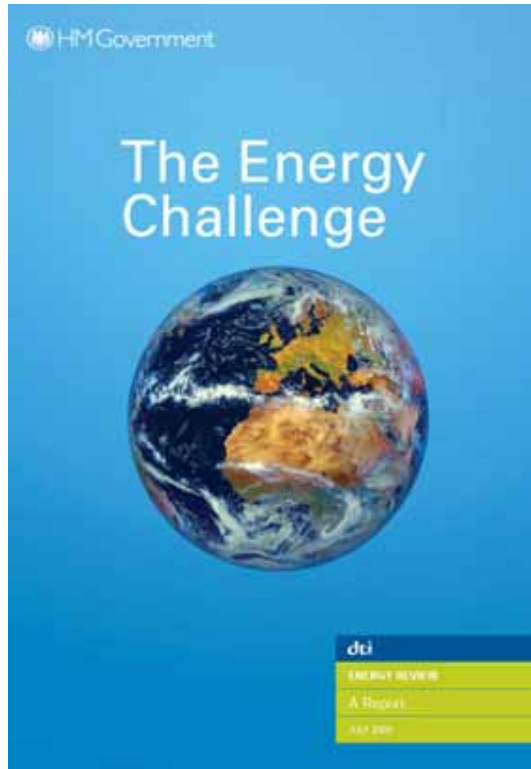
- Establish Northern Ireland as a world class exemplar in the development and use of renewable energy technology
- Encourage and support the development of new industry in renewable and alternative sustainable energy technologies
- Beyond 2025, 40% of all electricity consumed in Northern Ireland is obtained from indigenous renewable energy sources with at least 25% of this being generated by non-wind technologies



www.planningni.gov.uk



Energy Review Report - Implications for the Region



- Nuclear ruled out
- To become an exemplar for Renewable Energy in the UK
- £59 million for Environment and Renewable Energy Fund
- DARD Strategy to promote on farm renewable energy
- Updated Planning Policy and Building regulations



www.planningni.gov.uk





Getting the Wind Up?



www.planningni.gov.uk



Need for Review acknowledged

Key issues Arising

- Focus not just on wind energy generation, but all forms – Solar, Hydro power and Geothermal
- Increased emphasis on Micro-generation
- Integration of renewable energy with new development – The Merton Rule



www.planningni.gov.uk



PPS 18 Planning for Renewable Energy

- Work commenced Spring 2006
- Stakeholder involvement well established (including key representation for Industry by BWEA)
- The aim is to bring forward updated planning policy that will encourage and facilitate the provision and siting of renewable energy facilities in appropriate locations within the built and natural environment.



www.planningni.gov.uk



PPS 18 and Wind Energy

- Recognition that Wind Energy has a significant role
- Amenity concerns – Impact on dispersed properties
- Environmental concerns – Carbon friendly or not?
Impact on Protected Sites – SACs/SPAs
Archaeological impacts
- Landscape concerns – Areas of Outstanding Natural Beauty. In particular the Mourne - Northern Ireland's first National Park?

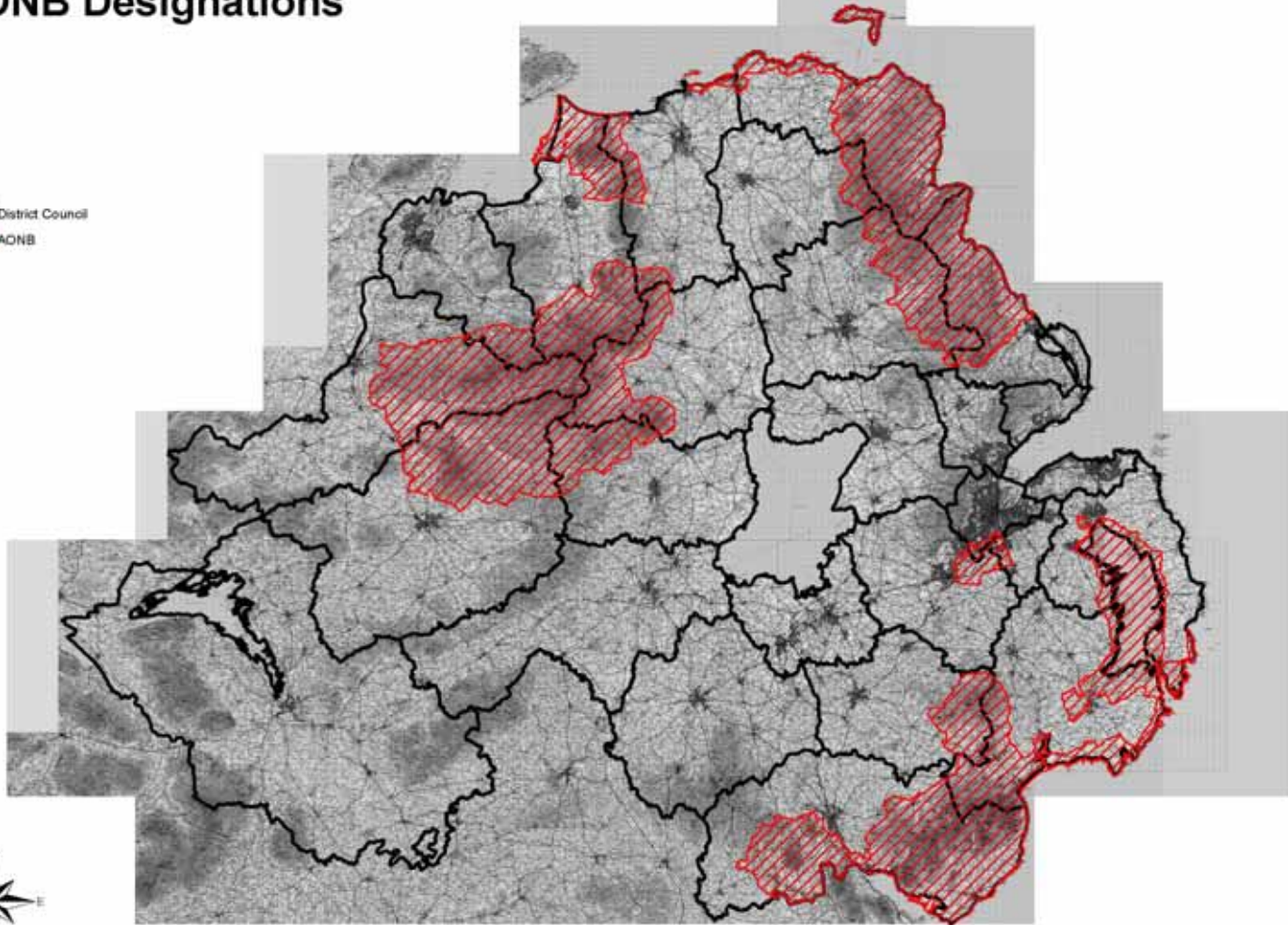


www.planningni.gov.uk



AONB Designations

 District Council
 AONB



0 5 10 20 30 40 Kilometers

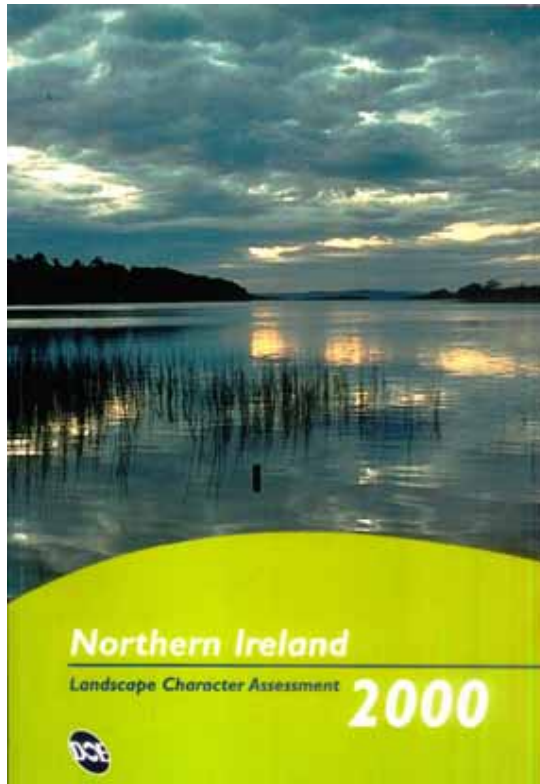


www.planningni.gov.uk



The Way Forward

The Northern Ireland Landscape Character Assessment



- develop a set of criteria to reflect the attributes of a landscape, that influence its sensitivity to wind energy developments, including associated infrastructure;
- Suggest the appropriate scale of wind energy development that may, potentially, be appropriate relative to landscape sensitivity in each of the Landscape Character Areas;
- provide general principles relative to the different types of wind energy development



www.planningni.gov.uk



Timeframe

- Landscape Sensitivity study by December 2006
- Publication of draft PPS18 Renewable Energy by Spring 2007
- 4 month consultation process
- Final PPS 18 anticipated Autumn 2007
- Stakeholder involvement throughout process



www.planningni.gov.uk



Factors impacting on renewable energy

- A new administration and a new Minister?
Decision by 24th November 2006 – we hope
- Amendment to the Building Regulations to require mandatory micro-generation in all new buildings - from 1 April 2008
- Review of consenting regime for major electricity generating schemes – underway to be completed 2007
- Review of Public Administration – to be in place 2009
- Quality of information submitted with application – **needed NOW**



www.planningni.gov.uk





Getting the Wind Up?



www.planningni.gov.uk

