

WINDFARMS AND LOW FLYING

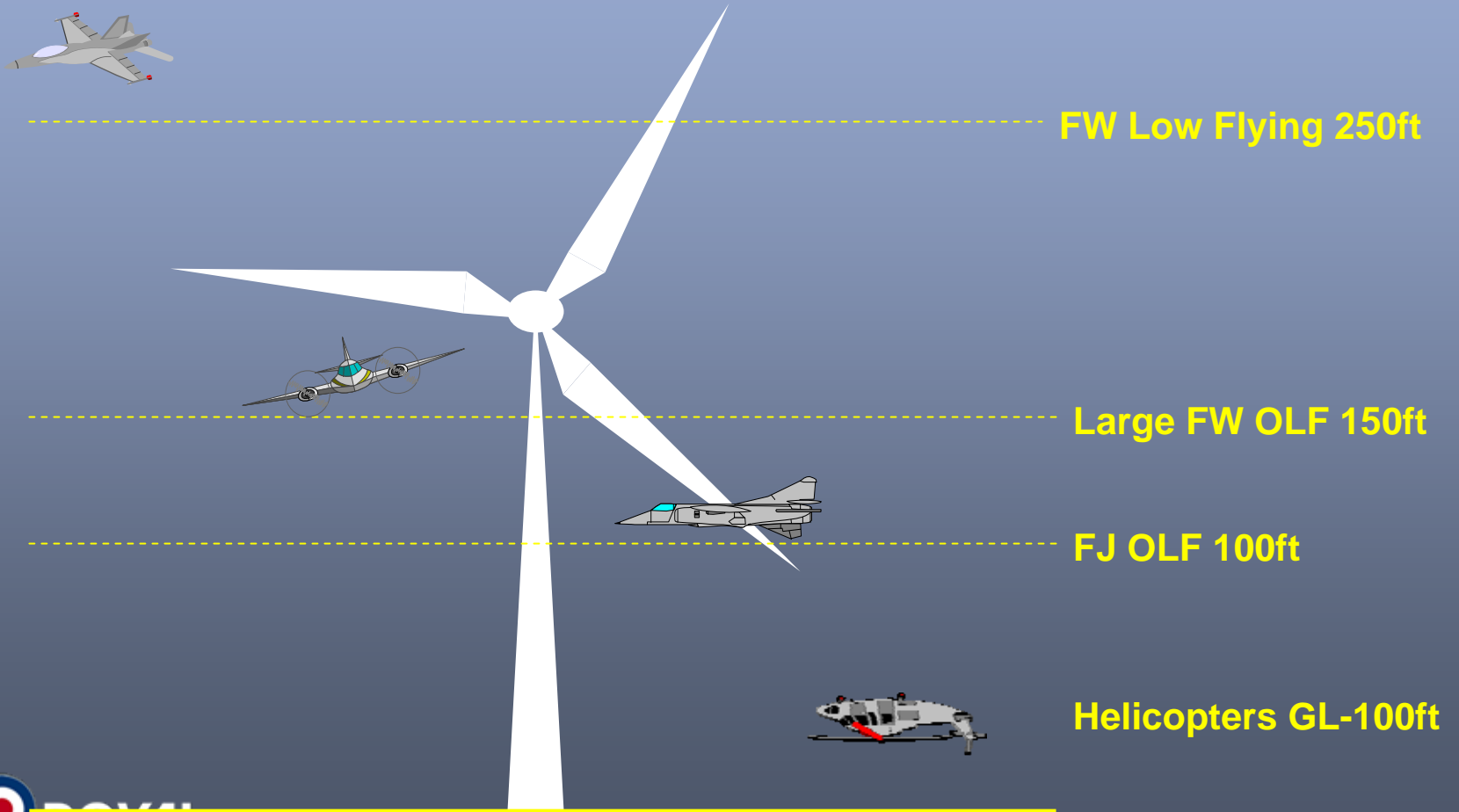
Sqn Ldr Archie Brown

SO2 A5 Plans – HQ 1 Gp

Scope

- UK Military Low Flying System
- Conflicts with Windfarms
- Assessment Process
- Stats
- Residual Concerns

Low Flying Heights



Windfarms Vs Low Flying

- Tactical Training Areas
- Dedicated User Areas
- Spadeadam Electronic Warfare Tactics Range
- Air Weapons Ranges
- System conflicts

Information Required

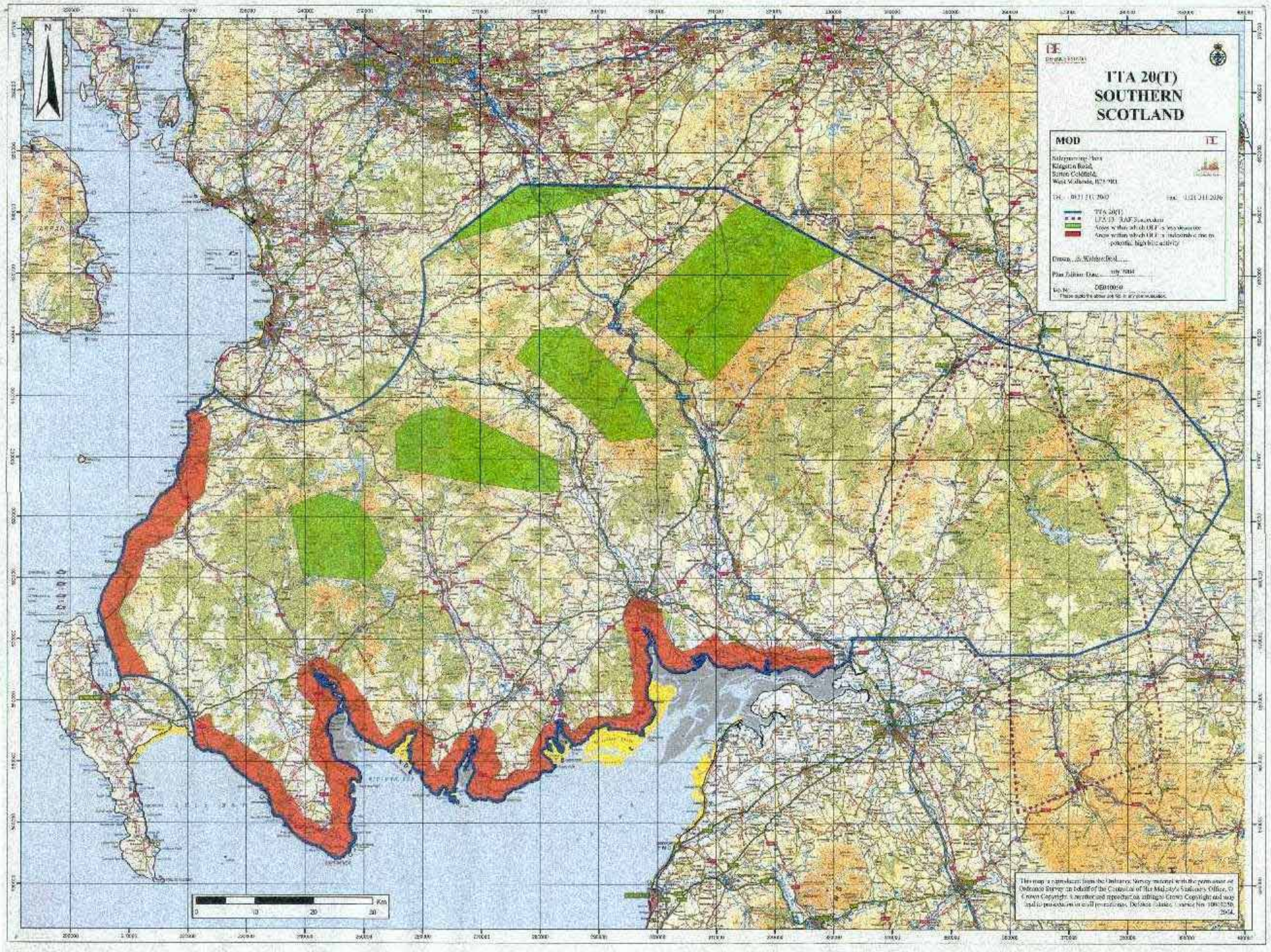
- Size/area of windfarm
- Number of turbines
- Turbine layout
- Size of turbines

Assessment Process

- Coarse assessment
 - Position information vital at this stage
- Refined assessment
- Initial response
- Further consultation
- Site visit
- 3-D simulation

Factors Considered

- Topography
- Proximity to LFA/TTA boundary
- Proximity to other obstructions
- Proximity to avoidance areas
- Effect on recognised routes/flightspaths
- Proliferation



**TTA 20(T)
SOUTHERN
SCOTLAND**

MOD

Information from
Kilgobbin Road,
South Collieston,
West Lothian, EH23 9RT

DC: 0131 311 7000 FAX: 0131 311 2076

TTA 20(T)
TTA 20 (S) SAF Sub-sector
Areas within which OLF is prohibited
Areas within which OLF is prohibited due to
potential high fire activity

Owner: J. Wilson Ltd

Plan Author: EAC: July 2004

Map No: 06810049

These data are subject to copyright.

This map is reproduced from the Ordnance Survey material with the permission of Ordnance Survey on behalf of the Controller of the Ordnance Survey Office. Crown Copyright. Aerial photography copyright Crown Copyright and used in accordance with all permissions. Defence Geospatial Centre, Version No. 1004325b, 2004.

Low Flying Stats

	2005	2006
TOTAL ASSESSED	666	449
TOTAL CONCERNS	52	31
7T CONCERNS	4	2
14T CONCERNS	5	2 (1)
20T CONCERNS	22 (9)	13 (11)
SPADEADAM CONCERNS	8	6
OTHER CONCERNS	13	8

Figures in brackets are number of proposals that were not objected to at the initial proposal stage in these areas

Residual Concerns

- Marking of windfarms on Low Flying Charts
- Lighting of turbines
- Cumulative impact

Questions?